



WITH ADDED BIOCHAR

# eco-flo lime<sup>®</sup>

## SUPERIOR ACID SOIL CORRECTION WITH HIGH CALCIUM LEVELS

ACTIVE INGREDIENTS: 23% w/v Calcium, 8% w/v Carbon

- Rapidly corrects acidic soils
- Liquid formulation works faster than powdered lime
- No digging required – just water it in
- Improves soil fertility and structure
- Boosts calcium and carbon for better fruit, veggies and flowers



CONTENTS  
**500mL**



Treats up to  
**200m<sup>2</sup>**

Y20-3025

### DIRECTIONS FOR USE

Shake bottle well and dilute required amount into a watering can. Water evenly onto garden beds and lawns. **DO NOT ALLOW PRODUCT TO DRY ON FOLIAGE OR HARD SURFACES. RINSE OFF TO PREVENT SHORT TERM STAINING.**

AVOID APPLYING AROUND ACID LOVING PLANTS LIKE AZALEAS, CAMELLIAS, GARDENIAS.

### TO CORRECT ACIDIC SOILS

SOIL TYPE	RATE	COVERAGE
Clay Soils	50mL per 9L watering can	5m <sup>2</sup>
Sandy & Loam Soils	40mL per 9L watering can	5m <sup>2</sup>

Test soil pH after 2 weeks and reapply if necessary.

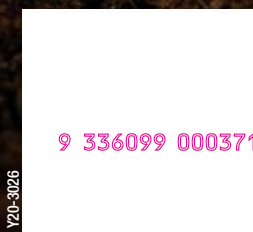
### FOR GENERAL MAINTENANCE AND TO BOOST CALCIUM LEVELS IN YOUR SOIL

SOIL TYPE	RATE	COVERAGE
Clay Soils	25mL per 9L watering can	5m <sup>2</sup>
Sandy & Loam Soils	15mL per 9L watering can	6m <sup>2</sup>

### REPEAT APPLICATIONS

SITUATION	FREQUENCY
Acidic Soils	As required.
Lawns & General Garden Beds	Apply twice a year for maximum plant health.
Fruit & Vegetable Plants	Apply at the beginning of the growing season with a follow-up application 2-3 months later for heavy fruiting plants.
Fruit Trees	Apply twice a year, first at flowering and when fruit is half size.

For more information visit: [ecoorganicgarden.com.au](http://ecoorganicgarden.com.au) or [ecoorganicgarden.co.nz](http://ecoorganicgarden.co.nz)



**PRECAUTION:** Avoid eye and skin contact or ingestion of product.

**FOR EMERGENCIES ONLY CALL 24 HOURS:**  
1800 033 111 (AUS) OR 0800 734 607 (NZ)

eco-flo lime and the OCP drop device are trade marks of Organic Crop Protectants.

**ORGANIC CROP PROTECTANTS AUSTRALIA**  
1956 Dandenong Rd,  
Clayton VIC 3168  
Phone 1800 634 204

**ORGANIC CROP PROTECTANTS NEW ZEALAND**  
The Gate, 373 Neilson St  
Onehunga 1061, Auckland  
Telephone: 0800 686 600

9326